

DECAL LOCATION

Your H&S Manure Spreader was manufactured with operator safety in mind. Located on the manure spreader are various decals to aid in operation, and warn of danger or caution areas. Pay close attention to all decals on your Manure Spreader.



DO NOT REMOVE ANY OF THESE DECALS. IF DECALS ARE LOST, DAMAGED, OR IF MANURE SPREADER IS REPAINTED, REPLACE DECALS. REMEMBER: DECALS ARE FOR YOUR PROTECTION AND INFORMATION.

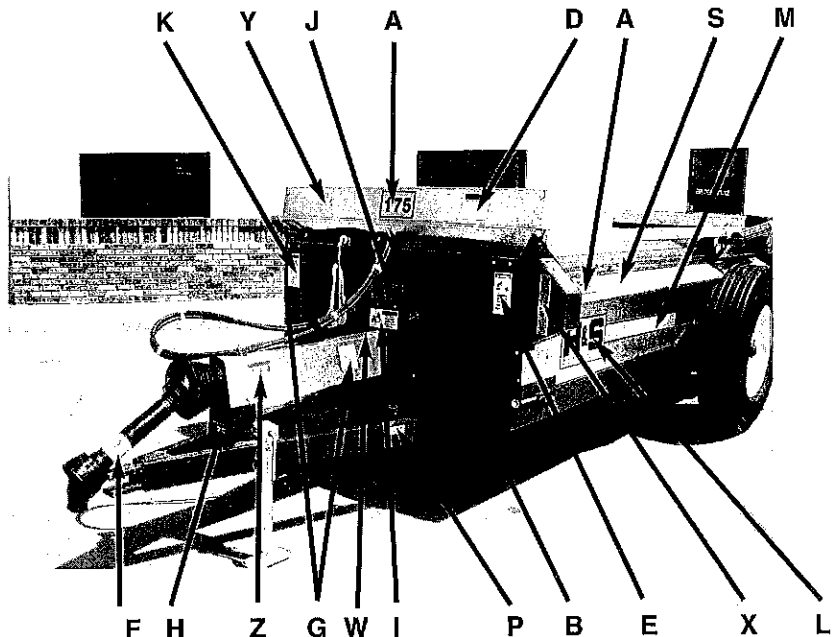
Listed below are the decals on your Manure Spreader. These decals may be ordered individually by part number or by ordering a complete set.

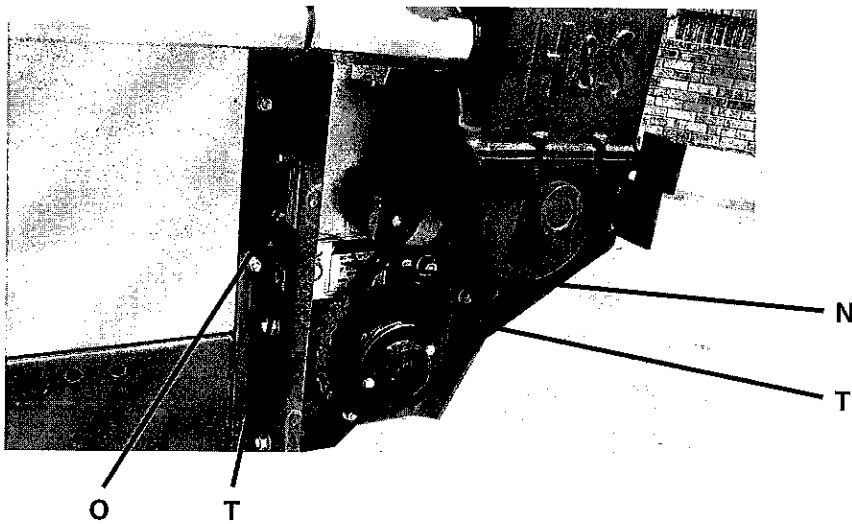
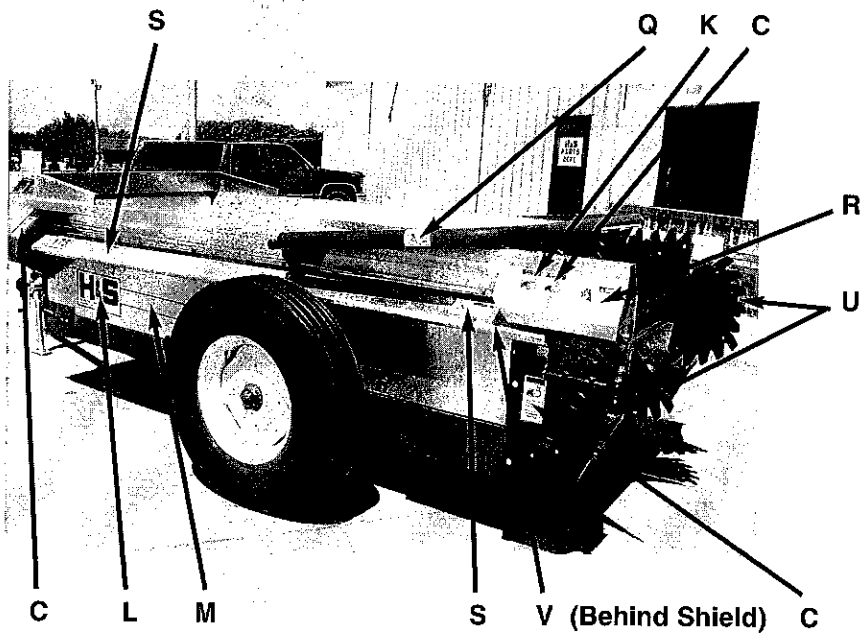
ITEM	PART NO.	DESCRIPTION
A	11590A	(3) Model 175
B	FEMA	
C	1494K	(3) Warning - Do Not Remove Shields
D	72203A	Warning - Help Avoid Injury
E	9194B	Danger - Never Allow Riders
F	Weasler	Danger - Rotating Driveline (H&S Decal 1494L)
G	9194A	(2) Danger - No Step
H		Serial Number
J	82793	Beater Apron Control
K	1494J	(2) Warning - Do Not Clean or Work
L	B17	(2) H&S Decal (9x17)
M	11590E	(2) Yellow Stripe
N	1494A	(3) Warning - Do Not Operate
O	112-11176	(2) Shear Bolts
P	71188B	Jack Storage Position
Q	111593C	(2) Warning - Stay Clear of Endgate (If So Equipped)
R	111593A	(2) Danger - Stay Clear of Beater
S	12794	(2) Warning - Do Not Remove Shields
T	093020	(2) Grease
U		(2) Red Reflector
V	71494A	Warning - Do Not Operate
W	11599	Warning - Stay Clear of Leaks
X		Amber Reflective
Y	H&S	Patent Numbers
Z	82602	Warning - Crushing Hazard
	62003-175	Complete Set of Decals - Model 175

Paint - H & S Red

ZX21
ZX22
ZX23

Gallon
Quart
Pint





Shields Removed for Clarity

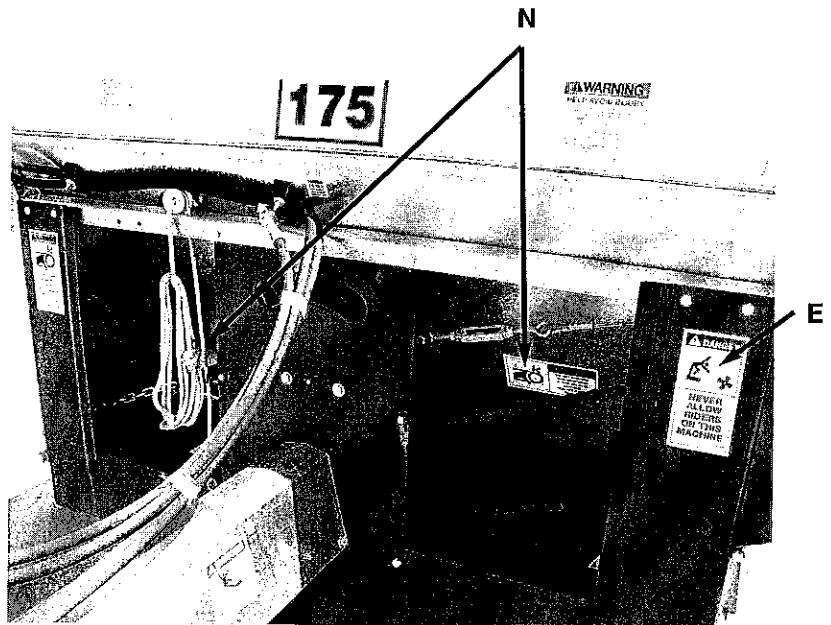
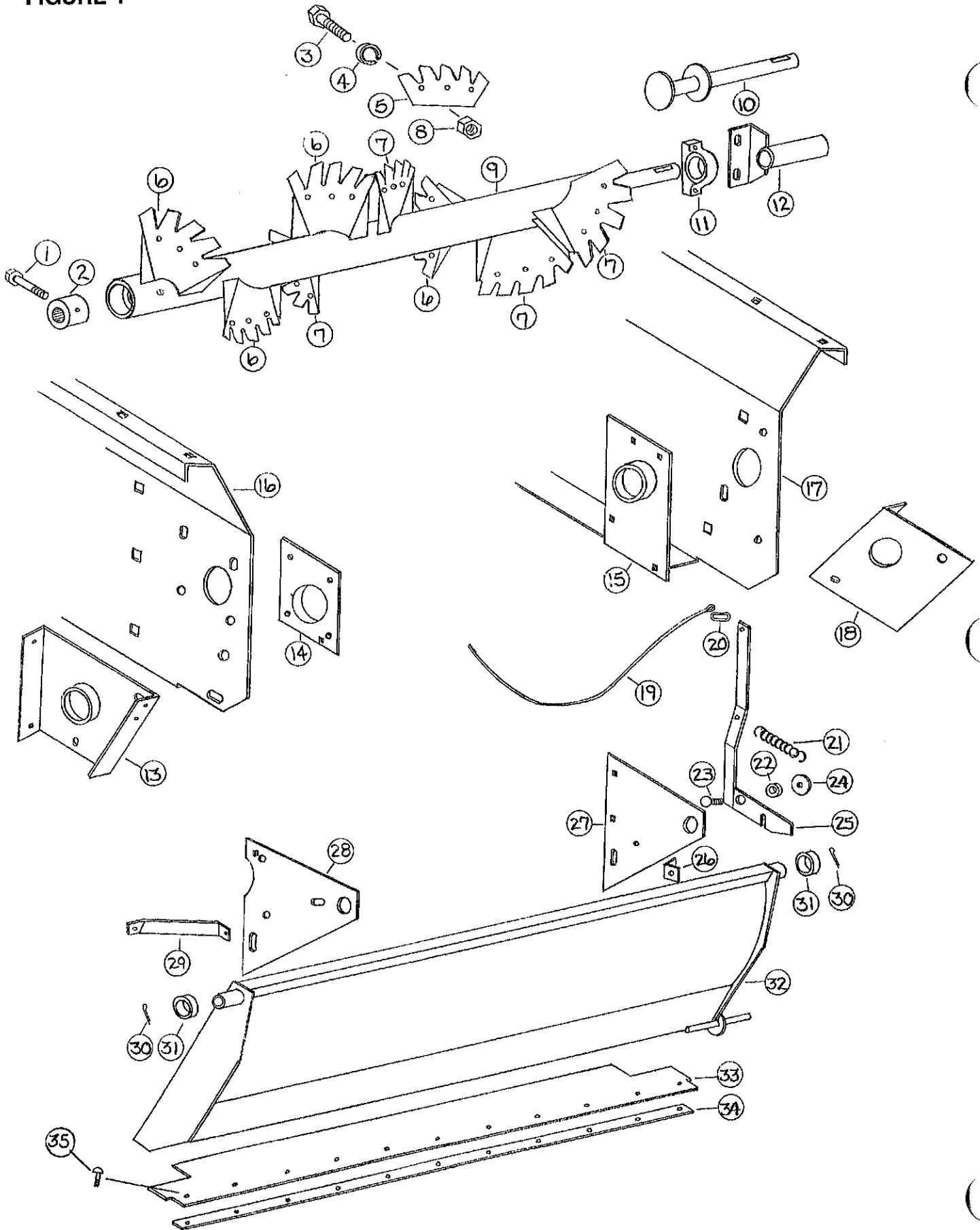


FIGURE 1



**FIGURE 1
H&S MODEL 175
BEATER AND PAN ASSEMBLY**

ITEM	PART NO.	DESCRIPTION
1.	23N1	5/16" x 5" GR.5 Bolt
2.	23N2	Splined Beater Insert
3.	R10	1/2" x 1-1/4" GR.5 Bolt
4.	R35	Lock Washer
5.	17G2	Replacement Beater Comb
6.	17G3	LH Beater Blade
7.	17G4	RH Beater Blade
8.	R11	1/2" Lock Nut
9.	17G5	Beater
10.	17G6	Beater Stub Shaft
11.	17G7	Pillow Block Bearing
12.	17G8	Stub Shaft Shield
13.	17G9	LH Drive Shaft Mount
14.	17G10	LH Anti-Wrap Guard
15.	17G11	RH Anti-Wrap Guard
16.	17G12	LH Side Panel
17.	17G13	RH Side Panel
18.	17G14	RH Drive Shaft Mount
19.	17G15	Pan Trip Rope
20.	R31	Clip
21.	R27	Spring
22.	23N23	Spacer
23.	23N22	Carriage Bolt 1/2" x 1-1/2"
24.	A34	1/2" Flat Washer
25.	17G16	Pan Trip Lever
26.	R26	Angle
27.	17G17	RH Pan Support
28.	17G18	LH Pan Support
29.	17G19	Pan Brace
30.	R70	Cotter Pin
31.	F112	Spacer
32.	17G20	Pan
33.	17G21	Pan Rubber Flap
34.	17G22	Pan Strap
35.	17G1	1/4" x 1-1/2" Carriage Bolt

FIGURE 2

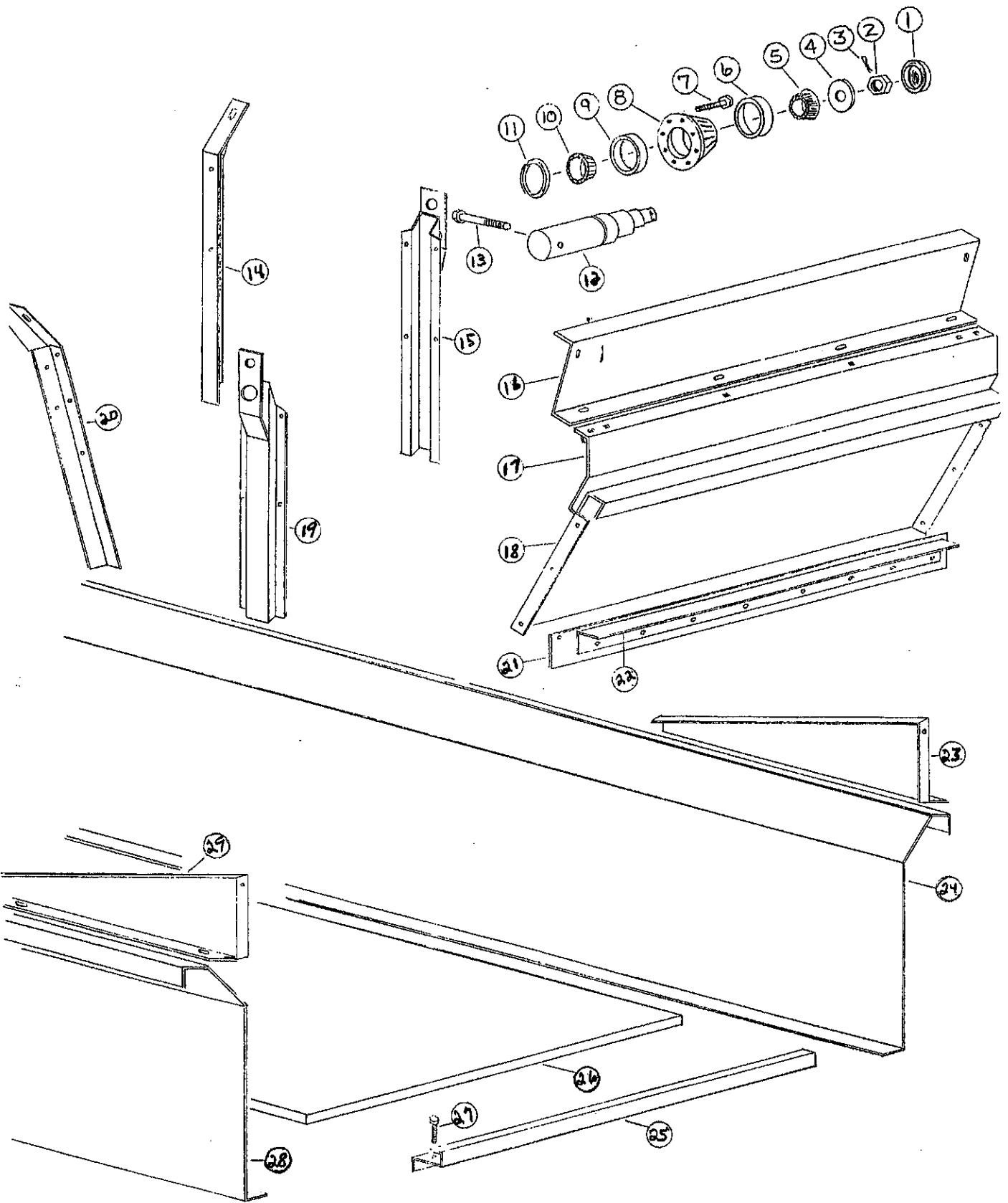


FIGURE 2
H&S MODEL 175
SPINDLE, HUB AND BOX PARTS

ITEM	PART NO.	DESCRIPTION
1.	17G144	Hub Cap
2.	B3	Nut
3.	B31	Cotter Pin
4.	B4	Washer
5.	17G145	Outer Bearing
6.	17G146	Outer Race
7.	17G147	Hub Bolt
8.	17G148	Hub
9.	17G149	Inner Race
10.	17G150	Inner Bearing
11.	17G151	Seal
12.	17G152	Spindle Right Hand
	17G153	Spindle Left Hand
13.	23N53	1/2" x 4" GR.5 Bolt
14.	17G24	LH Back Stake
15.	17G25	Side Stake
16.	17G26	Front Splash
17.	17G27	Front Flare
18.	17G28	Front Panel
19.	17G25	Side Stake
20.	17G29	RH Back Stake
21.	17G30	Front Rubber
22.	17G31	Angle for Rubber
23.	17G32	Splash Guard Side LH
24.	17G12	LH Side Panel
25.	17G33	Front Poly Floor Hold down
26.	17G158	Poly Floor
27.	17G35	Carriage Bolt
28.	17G13	RH Side Panel
29.	17G36	Splash Guard Side RH
Not Shown	17G154	Hub Assembly Complete
Not Shown	17G38	Complete Frame
Not Shown	17G155	Wheel 7 x 20
Not Shown	17G156	Tire 8.25 x 20

FIGURE 3

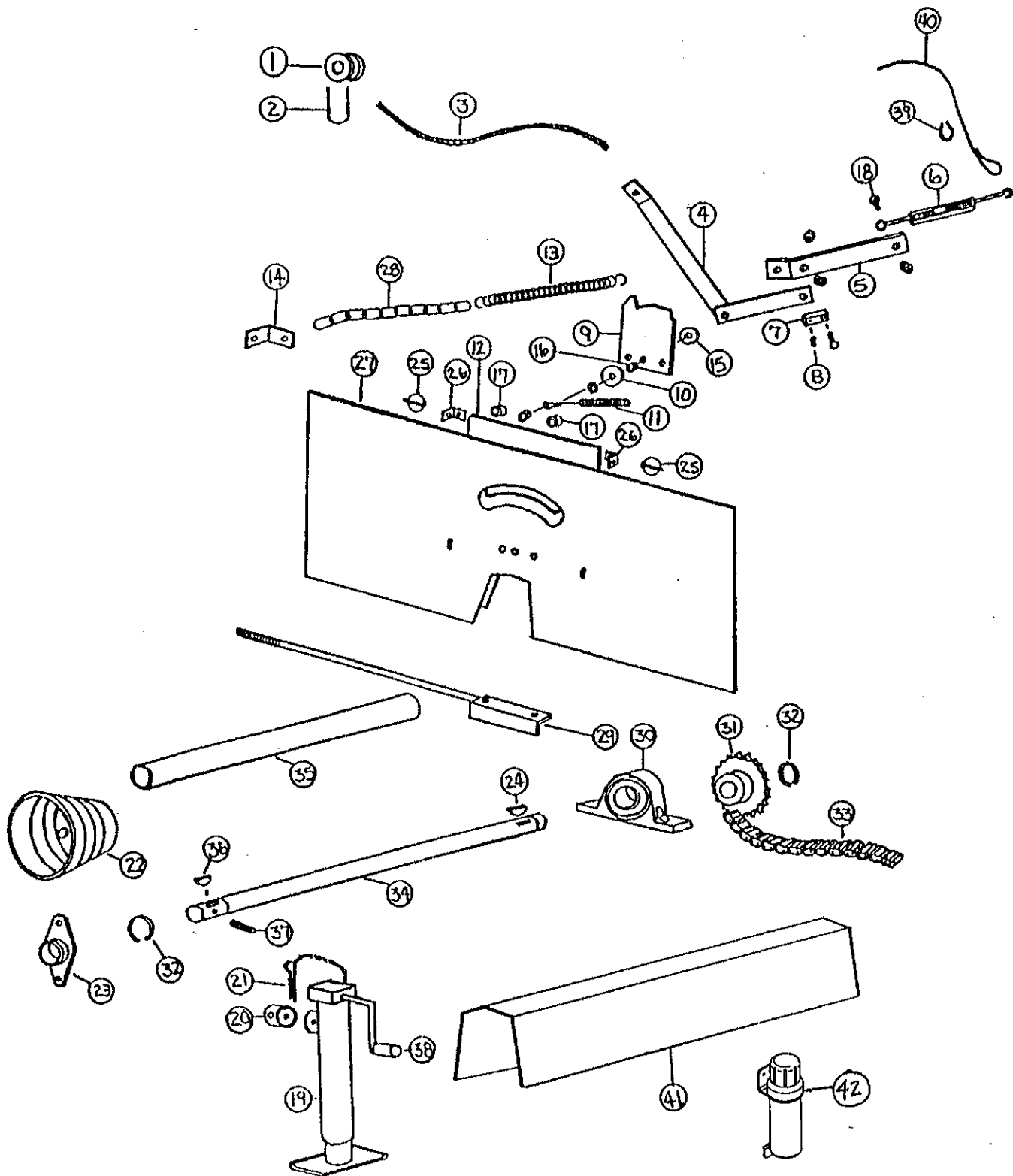
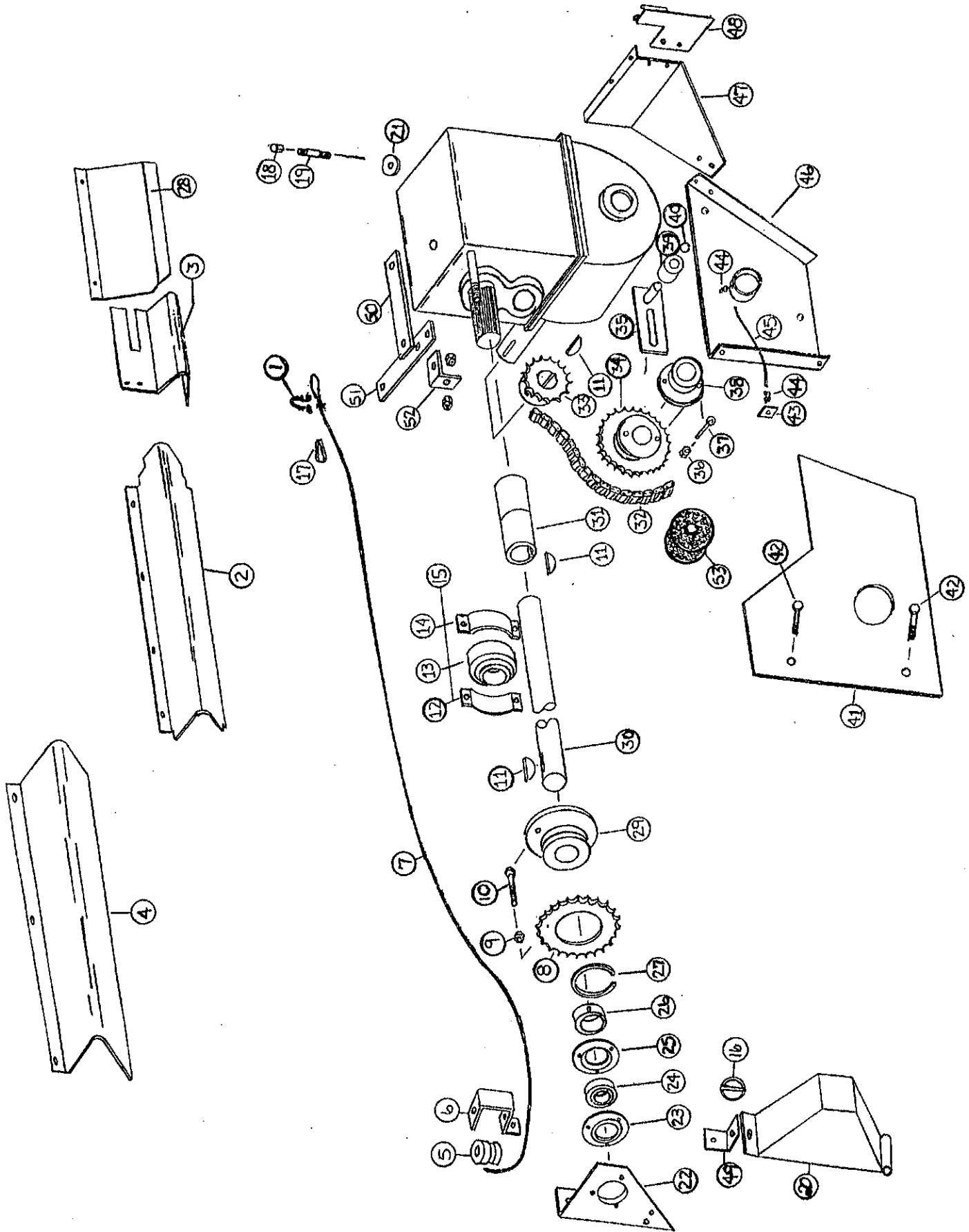


FIGURE 3
H&S MODEL 175
FRONT SHIELD AND DRIVE ASSEMBLY

ITEM	PART NO.	DESCRIPTION
1.	F33	Cable Guide
2.	F32	U-Bolt
3.	23N183	Rope
4.	23N280	Shift Lever
5.	23N281	Pivot Link
6.	F84	Turnbuckle
7.	23N282	Shifter Dog
8.	G89	Grease Zerk
9.	23N283	Stop Bracket
10.	S304	Washer
11.	23N284	Shifter Dog Spring
12.	17G172	Front Panel
13.	10R14	Spring
14.	17G177	Spring Mount Angle
15.	S304	Washer
16.	23N297	Spacer
17.	ST81	Spacer
18.	BFR247	3/8" x 1" Carr. Bolt G R.5
19.	12N116	Jack
20.	12N121	Jack Mount
21.	12N117	Jack Pin
*	12N118	Replacement Bearing
22.	17G45	PTO Shield
23.	12N29	Bearing
24.	5B9	3/8" x 1-1/4" Woodruff Key
25.	F56	Clip Pin
26.	R26	Shield Bracket
27.	17G173	Front Poly Shield
28.	17G178	Chain
29.	17G48	Tightener Rod
30.	17G7	Pillow Block Bearing
31.	23N70	25T Sprocket
32.	F73	Snap Ring
33.	17G49	#60 Chain 116 Pitches
34.	17G50	Front Shaft
35.	17G179	Front Shaft PVC Guard
36.	5B10	1/4" x 1" Woodruff Key
37.	F26	5/16" x 2-1/4" Roll Pin
38.	12N119	Handle
39.	F44	Cable Loop
40.	17G174	Cable
*	12N120	Jack Gear Replacement Kit
41.	17G157	Front Shaft Shield
42.	S522	Manual Holder

NOTE: * (Means Not Shown)

FIGURE 4



**FIGURE 4
H&S MODEL 175
BACK SHIELDS AND DRIVE ASSEMBLY**

ITEM	PART NO.	DESCRIPTION	ITEM	PART NO.	DESCRIPTION
1.	BFR220	Cable Clamp	28.	17G176	Shifter Shield
2.	17G52	Back Side Shield	29.	23N190	Shear Hub
3.	17G175	Coupler Shield	30.	17G64	Side Shaft
4.	17G54	Front Side Shield	31.	17G65	Coupler
5.	F33	Side Cable Guide	32.	17G66	#60 Chain 53 Pitches
6.	17G55	Rope Guide Bracket	33.	17G67	Worm Gear Sprocket
7.	17G40	Cable	34.	17G68	Shear Hub Sprocket
8.	23N191	30T Sprocket	35.	17G69	Chain Tightener Bracket
9.	D81	Lock Nut	*	17G70	Complete Tightener
10.	D31	Shear Bolt	36.	D81	Lock Nut
11.	5B9	3/8" 1-1/4" Woodruff Key	37.	D31	Shear Bolt
12.	12N35	Holder	38.	17G71	Shear Hub
13.	12N33	Bearing	39.	23N238	Chain Tightener Roller
14.	12N34	Bearing Cover	40.	10R32	Snap Ring
15.	12N36	Complete Bearing Assembly	41.	17G72	Back Poly Shield
16.	F56	Clip Pin	42.	12V3	5/16" Self-Tapping Bolts
17.	F44	Cable Loop	43.	16V9	Grease Zerk Block
18.	17G58	Vent Cap	44.	S47	Grease Line Fitting
19.	23N288	Pipe Nipple	45.	17G73	Grease Line
20.	17G76	Shield	46.	17G9	LH Drive Shaft Mount
21.	17G61	Washer	47.	17G74	Gearbox Brace
22.	17G62	Bearing Plate	48.	17G75	SMV Bracket
23.	F14	Bearing Flange	49.	23N242	Shield Angle
24.	F115	Bearing (Grease Type)	50.	23N289	Shifter Rod Lever Folcrum
25.	F114A	Flange	51.	23N290	Shifter Rod Lever
26.	F16	Lock Collar	52.	23N291	Shifter Rod Angle
27.	23N189	Snap Ring	53.	23N258	Chain Oiler

NOTE: * (Means Not Shown)

FIGURE 5

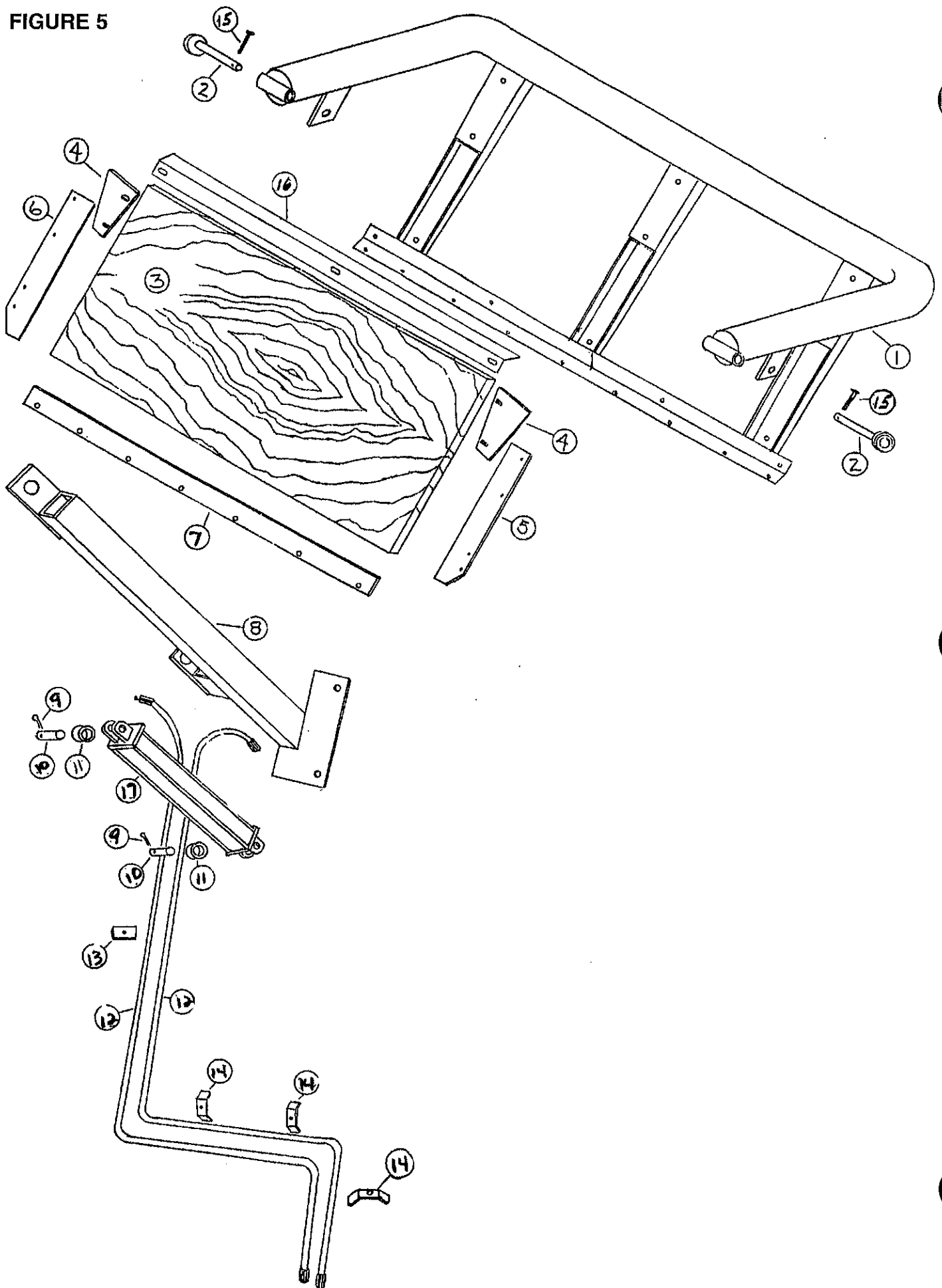
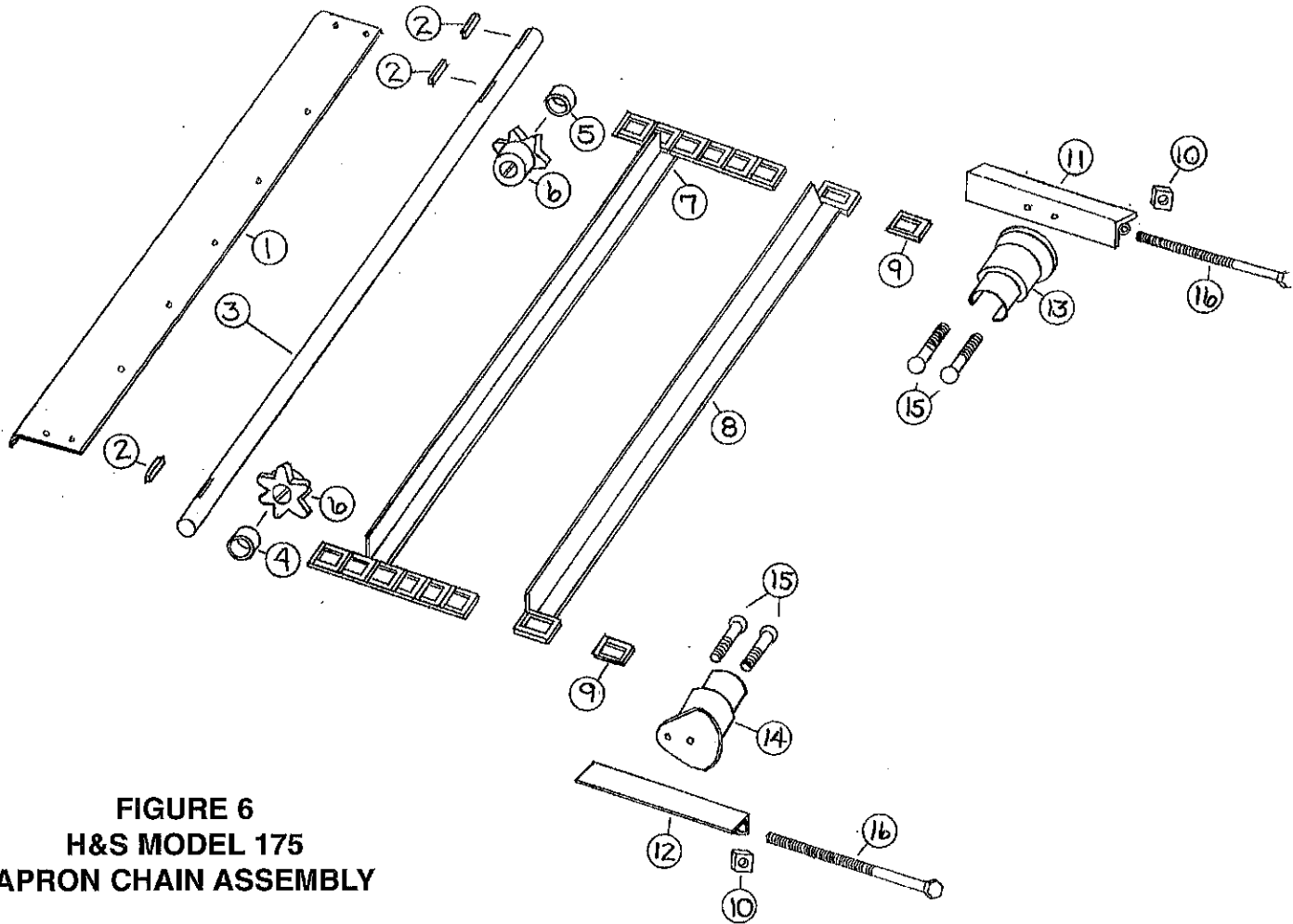


FIGURE 5
H &S MODEL 175
HYDRAULIC TAILGATE

ITEM	PART NO.	DESCRIPTION
1.	17G77	Tailgate Frame
2.	17G78	Tailgate Pin
3.	17G79	Tailgate Plywood
4.	17G80	Tailgate Corner
5.	17G81	LH Side Rubber
6.	17G82	RH Side Rubber
7.	17G83	Bottom Rubber
8.	17G84	Tailgate Mounting Tube
9.	23N108	Cotter Pin
10.	23N107	Cylinder Pin
11.	K132	Spacer
12.	23N302	22' Hose
13.	17G87	Hose Bracket
14.	23N67	Hose Bracket
15.	S84	5/16" x 2-1/2" Bolt GR.5
16.	17G160	Tailgate Plywood Hold down
17.	23N111	Hydraulic Cylinder



**FIGURE 6
H&S MODEL 175
APRON CHAIN ASSEMBLY**

ITEM	PART NO.	DESCRIPTION
1.	17G88	Drive Shaft Shield
2.	A32	3/8" x 1-3/8" Sq. Key
3.	17G89	Drive Shaft
4.	17G90	Spacer
5.	17G91	Spacer
6.	23N122	6T Sprocket
7.	17G92	Apron Chain 15 Slats, 188 Links
8.	17G93	Slat w/Att. Links
9.	S55	T-Rod Standard Link
10.	A20	1/2" Sq. Nut
11.	17G94	Chain Slide Angle LH
12.	17G95	Chain Slide Angle RH
13.	17G96	T-Rod Slide LH
14.	17G97	T-Rod Slide RH
15.	17G98	1/2" x 2-1/2" Carriage Bolt GR.5
16.	A7	1/2" x 9-1/2" Bolt

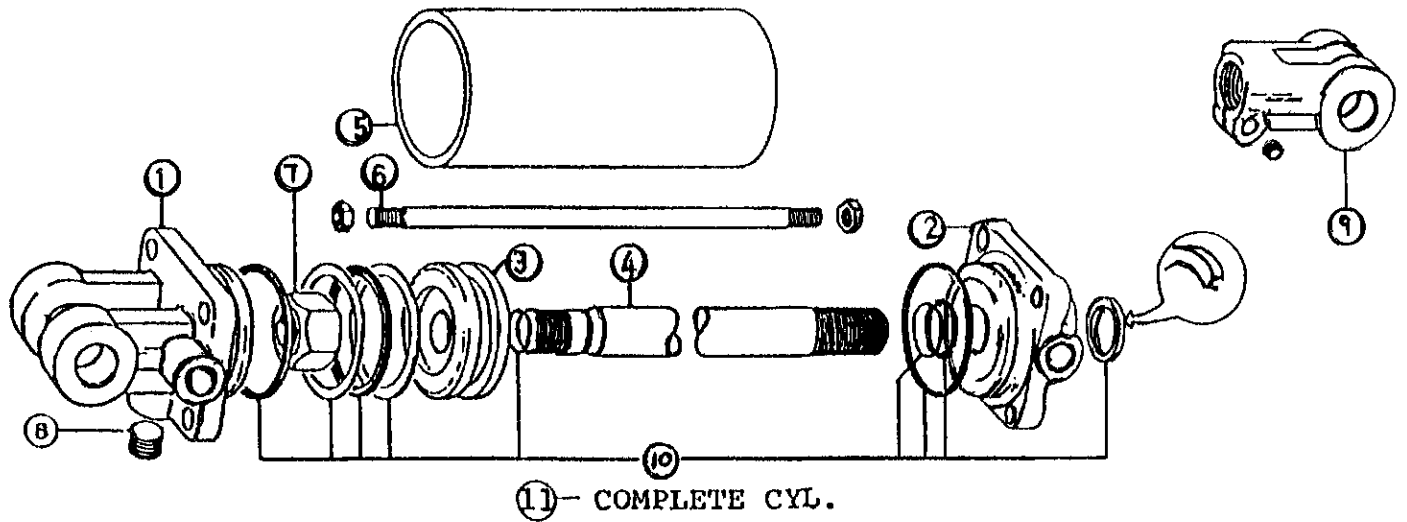
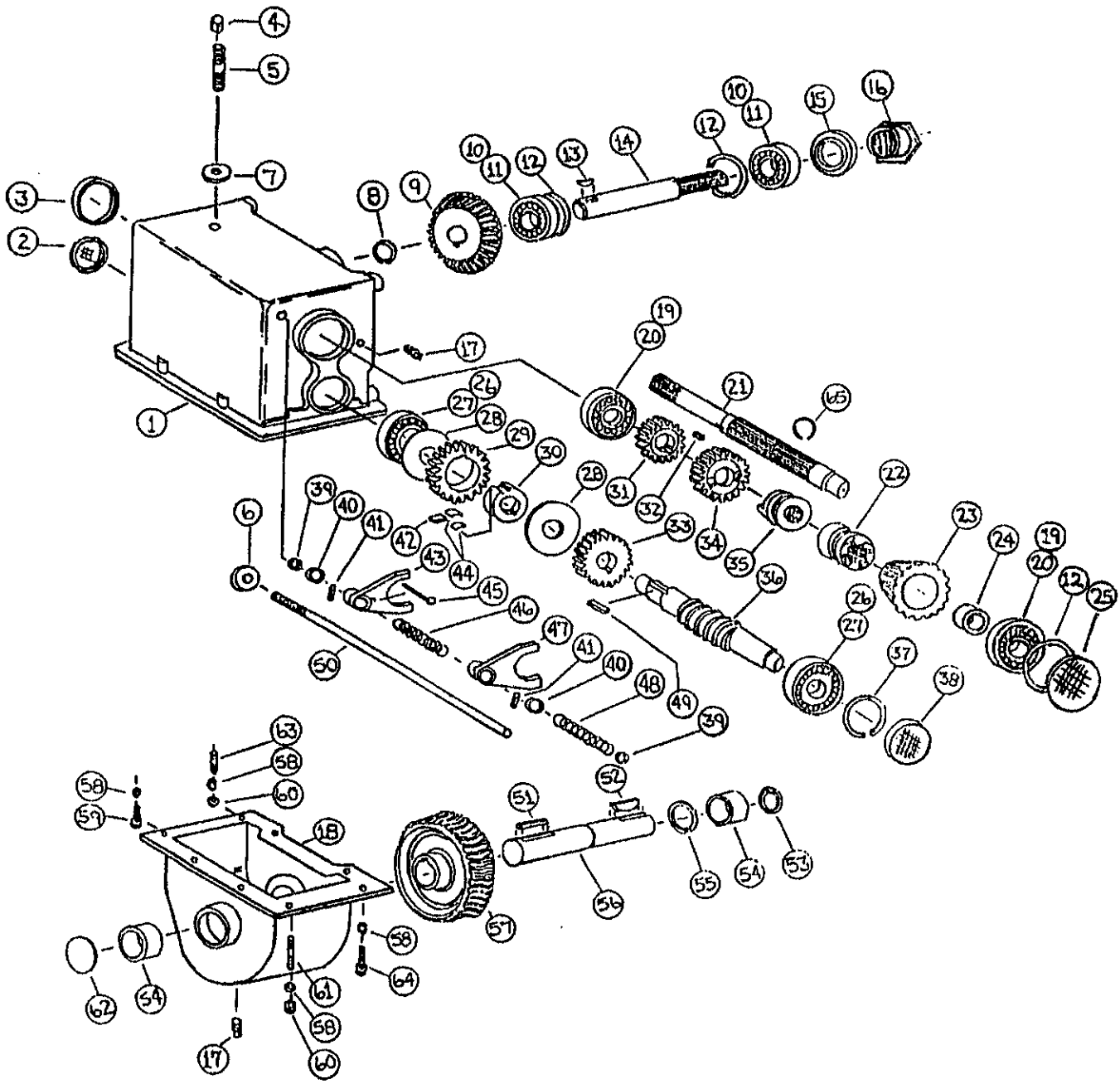


FIGURE 7
H&S MODEL 175
HYDRAULIC CYLINDER

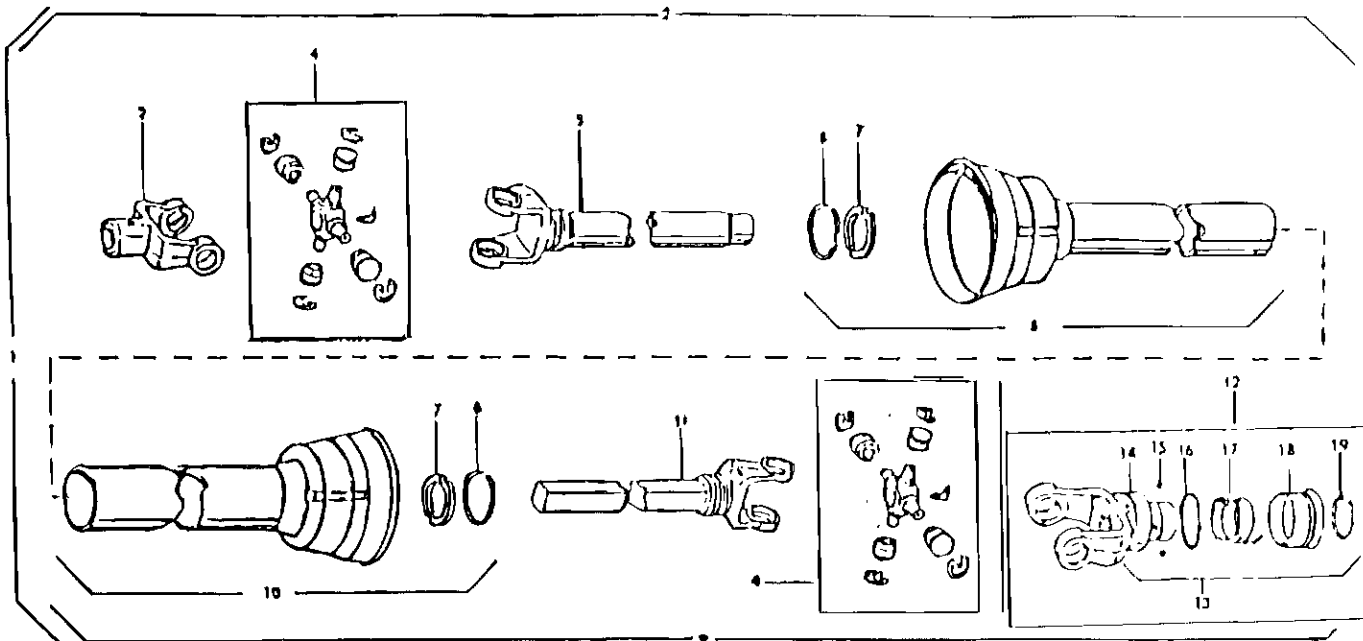
ITEM	PART NO.	DESCRIPTION
1.	23N142A	Clevis Cap
2.	23N143A	Rod Cap
3.	23N144	Piston
4.	23N145A	Rod
5.	23N146	Cylinder Tube
6.	23N147	Tie Rod
7.	23N148	Piston Nut
8.	23N149	Plug
9.	23N150A	Rod Clevis
10.	23N151	Seal Kit
11.	23N111A	Hydraulic Cylinder

FIGURE 8



**FIGURE 8
H&S MODEL 175
GEARBOX**

ITEM	PART NO.	DESCRIPTION	ITEM	PART NO.	DESCRIPTION
1.	17G99	Upper Gear Housing	34.	17G118	28T Gear w/Clutch
2.	17G100	Cap	35.	17G119	High-Speed Clutch
3.	S136	Seal	36.	17G120	Worm Shaft
4.	17G58	Vent Cap	37.	3G19	Retaining Ring
5.	23N288	Pipe Nipple	38.	G90	Cap
6.	17G171	Collar	39.	17G121	Seal
7.	17G61	Washer	40.	17G122	Spacer
8.	12V62	Retaining Ring	41.	17G123	3/16" x 1" Roll Pin
9.	17G101	22T Beveled Gear	42.	17G124	Clutch Dog
10.	17G102	Race 13621	43.	17G125	High Speed Shifter Yoke
11.	17G103	Bearing 13685	44.	17G126	Dog Spring/Low Speed Clutch
12.	G55	Retaining Ring	45.	17G127	Stop Bolt 1/4"-20 x 3" Full Thread
13.	G61	3/8" x 1-1/4" Hardened Woodruff Key	46.	17G128	Spring/Beater Engage
14.	17G104	Beater Output Shaft	47.	17G129	Beater Shifter Yoke
15.	17G105	Seal	48.	17G130	Spring/Beater Disengage
16.	17G106	Adjustment Nut	49.	S135	1/4" x 1-1/4" Key
17.	G65	Plug	50.	17G131	Shifter Rod
18.	17G107	Lower Gear Housing	51.	17G132	5/16" x 2-1/4" Key
19.	G54	Race 14276	52.	5B9	3/8" x 1-1/4" Woodruff Key
20.	G18	Bearing 14124	53.	17G133	Seal
21.	17G108A	Input Shaft	54.	17G134	Bushing 1-1/2" ID x 1-1/2" Length
22.	17G109	Beater Clutch	55.	17G135	Retaining Ring
23.	17G110	16T Beveled Gear w/Clutch	56.	17G136	Worm Gear Output Shaft
24.	17G111	Bushing 1-1/2" ID x 1" Length	57.	17G137	Worm Gear
25.	G68	Cap	58.	A14	3/8" Lock Washer
26.	3G18	Race 15245	59.	X111	3/8" x 1" Bolt GR.5
27.	L3G24	Bearing 15113	60.	K60	3/8" Nut
28.	17G112	Washer	61.	17G138	3/8" x 2" Stud
29.	17G113	32T Gear w/Clutch	62.	17G139	1-3/4" Cap
30.	17G114	Gear Hub w/Clutch	63.	17G140	3/8" x 1-1/2" Stud
31.	17G115	20T Gear	64.	17G141	3/8"-16 x 1-1/4" Bolt
32.	17G116	1/4" x 5/8" Key	65.	17G169A	1/8" Snap Ring
33.	17G117	24T Gear	**	17G142	Complete Gearbox



**FIGURE 9
H&S MODEL 175
PTO ASSEMBLY**

ITEM	PART NO.	DESCRIPTION
1.	23N152	PTO Assembly Complete w/Shields
2.	23N153	Machine Half PTO w/Shield
3.	G1R35	End Yoke Machine Half
4.	14NW KIT	Repair Kit
5.	23N155	Yoke and Tube
6.	24N26	Bearing Retainer
7.	4N20	Nylon Bearing
8.	23N156	Inner Guard Including Item #6 & #7
9.	23N157	Tractor Half PTO w/Shield
10.	23N158	Outer Guard Including #6 & #7
11.	23N159	Yoke and Shaft
12.	23N162	Lock Yoke Assembly
13.	S225	Spring Lock Repair Kit
14.	S226	Cover
15.	S212	Stainless Ball
16.	S227	Washer
17.	S228	Spring
18.	S229	Collar Assembly
19.	S215	Retaining Ring
*	S402	PTO Safety Manual

NOTE: * (Means Not Shown)

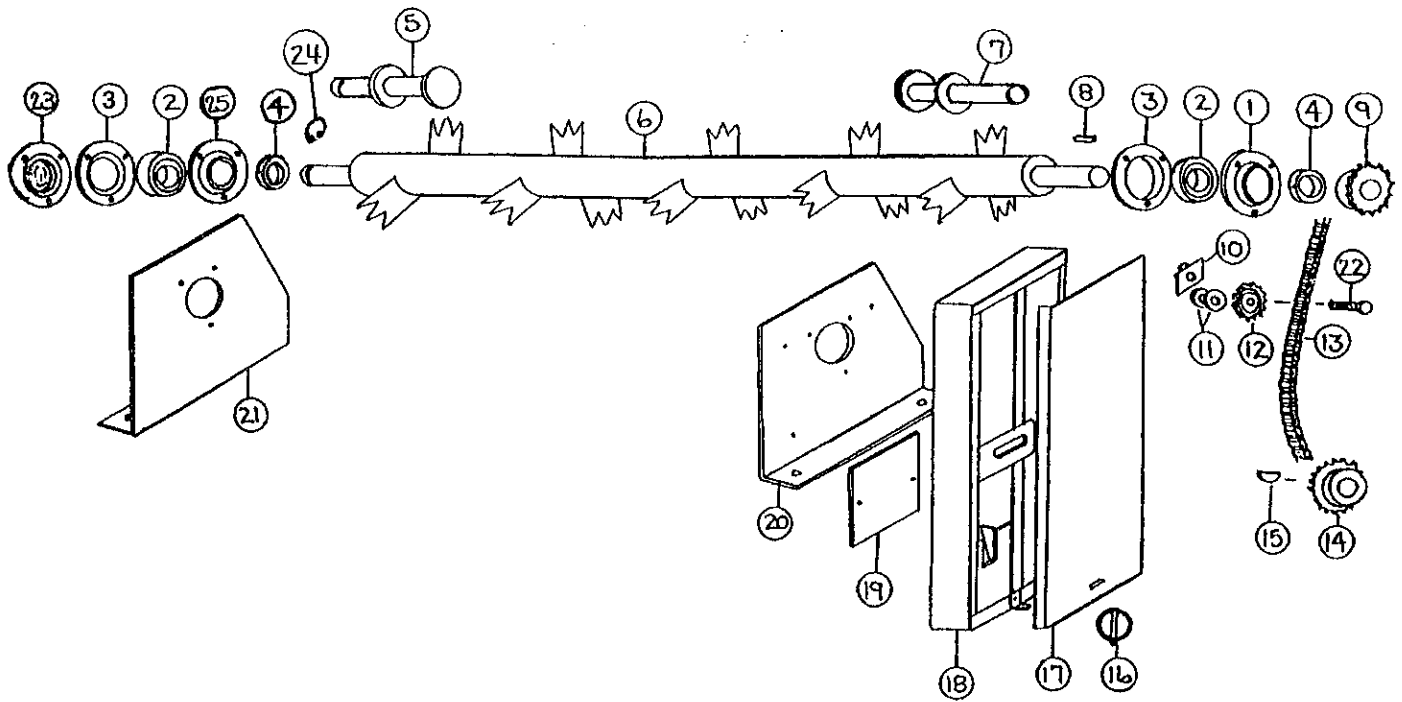


FIGURE 10
H&S MODEL 175
OPTIONAL TOP BEATER

ITEM	PART NO.	DESCRIPTION
1.	F114A	Bearing Flange w/Zerk 45°
2.	F115	Bearing
3.	F14	Bearing Flange
4.	F16	Lock Collar
5.	23N164	LH Stub Shaft
6.	17G180	2nd Beater
7.	17G186	RH Stub Shaft
8.	G23	5/16" x 1-3/8" Sq. Key
9.	D18	16T Sprocket
10.	22G34	Nut Bracket
11.	A34	1/2" Washer
12.	12N42	Idler Sprocket
13.	22G35	#60 Chain 80 Pitches
14.	F13	20T Sprocket (60B20)
15.	5B9	3/8" x 1-1/4" Woodruff Key
16.	F56	Clip Pin
17.	22G36	Cover
18.	17G181	Shield
19.	22G38	Shield
20.	17G182	RH Panel
21.	17G183	LH Panel
22.	BFR375	1/2" x 2-1/2" Bolt GR.5
23.	23N308	Bearing Flange Guard
24.	F73	Snap Ring
25.	F114	Flange w/Straight Zerk

